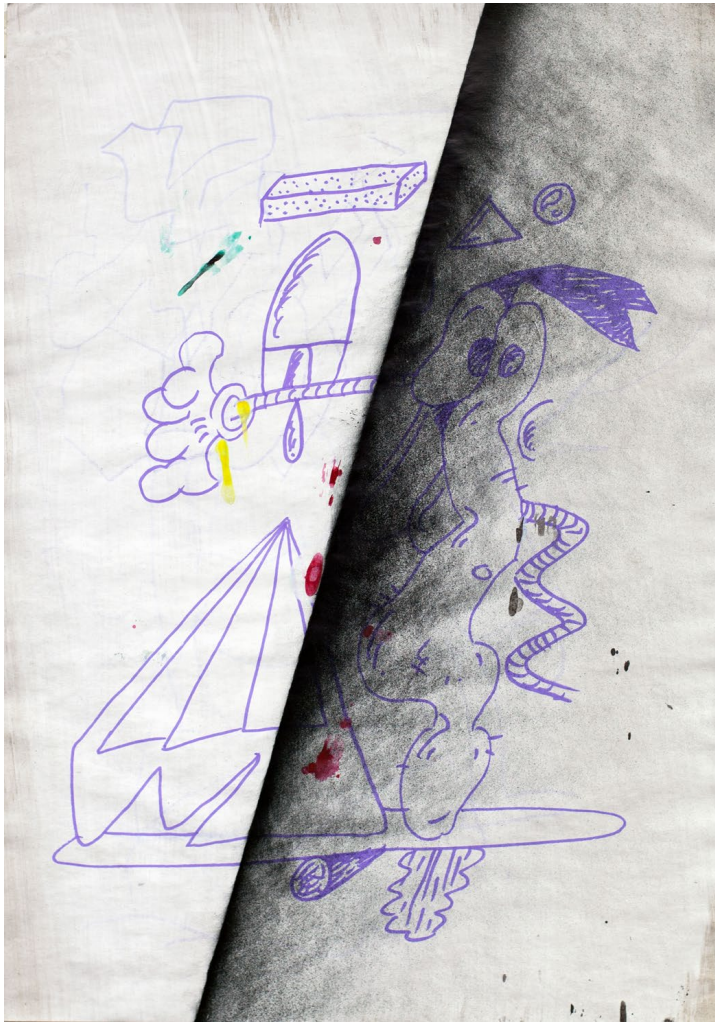




**CLEMENS REINECKE**





*Roxy, 2012*  
*liner, varnish & acrylics on paper*  
*42 x 29,7 cm*

## ***Simplify! On current works by Clemens Reinecke***

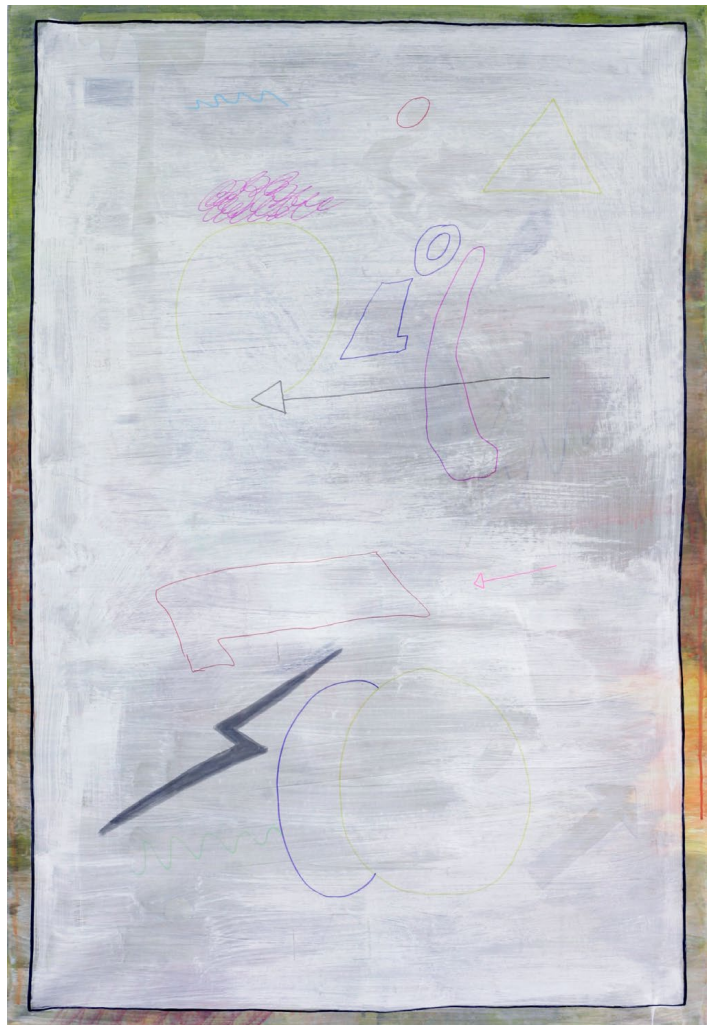
*While Clemens Reinecke still dealt with figurative-narrative pictorial elements in his works for his diploma in 2011, abstracting tendencies have become more and more apparent in his works on paper since last year. He continues to be concerned with the representability of spatiality, which he tries to capture in different techniques such as pencil and felt-tip drawing, ink or collage. While collage primarily served to create multi-layered pictorial elements that made the underneath and above of the constituted pictorial space visible almost in relief, Reinecke dispenses with this actual layering of paper on paper in his latest works.*

*Using white acrylic paint, he separates the individual painting layers from one another, but still achieves a coexistence of the various pictorial levels through the glaze. Individual shapes, the rulings of felt-tip pens, colored areas penetrate through the white glaze into the next layer and thus remain part of the resulting image. The curved line, arrows, circles and individual letters belong to the core arsenal of his formal vocabulary, which enters into a relationship with the two-dimensional backgrounds and sets them in motion. The action conveyed by these elements of the "graphic narrative strategy" is based on means of comic language and is deliberately employed by Reinecke to test "banal" or "non-aesthetic" variations of form in a simplifying process as a viable pictorial element.*

*The processuality of becoming a picture is one, perhaps even Reinecke's artistic theme. The question of "When is a picture a picture?" drives him and sometimes leads to the fact that under a next white layer of paint also a composition disappears irrevocably, which could have existed in the eyes of the artist. The decisive question is therefore also that of the right moment to stop, of when a painting has succeeded and the over knows what to do with the under. And this is often the infinite, still open composition, which leaves the viewer plenty of room to discover the pictorial symbols used by Clemens Reinecke and the different painting techniques.*

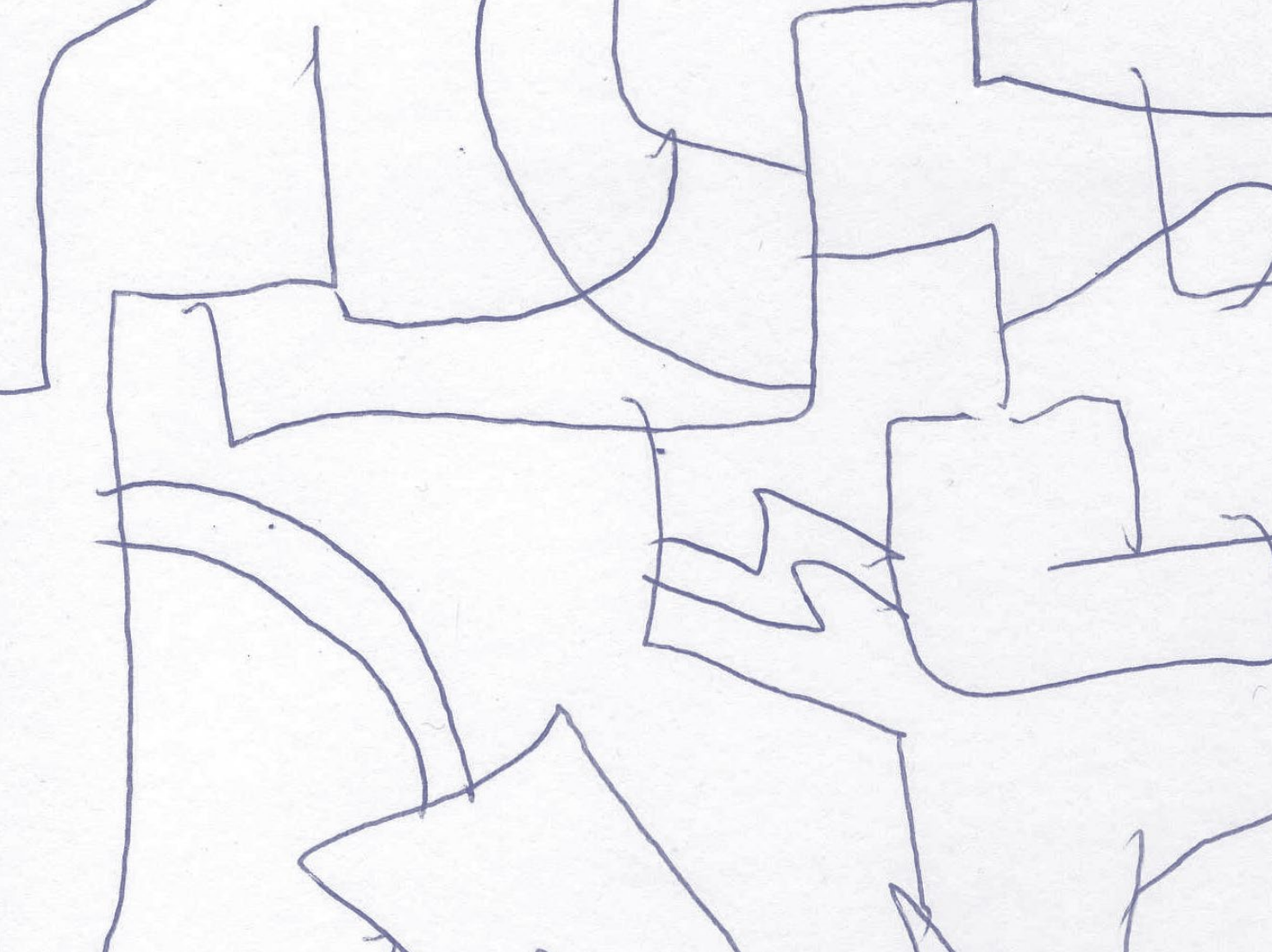


*Bild\_1, 2012*  
*liner, varnish & acrylics on paper*  
*150 x 110 cm*

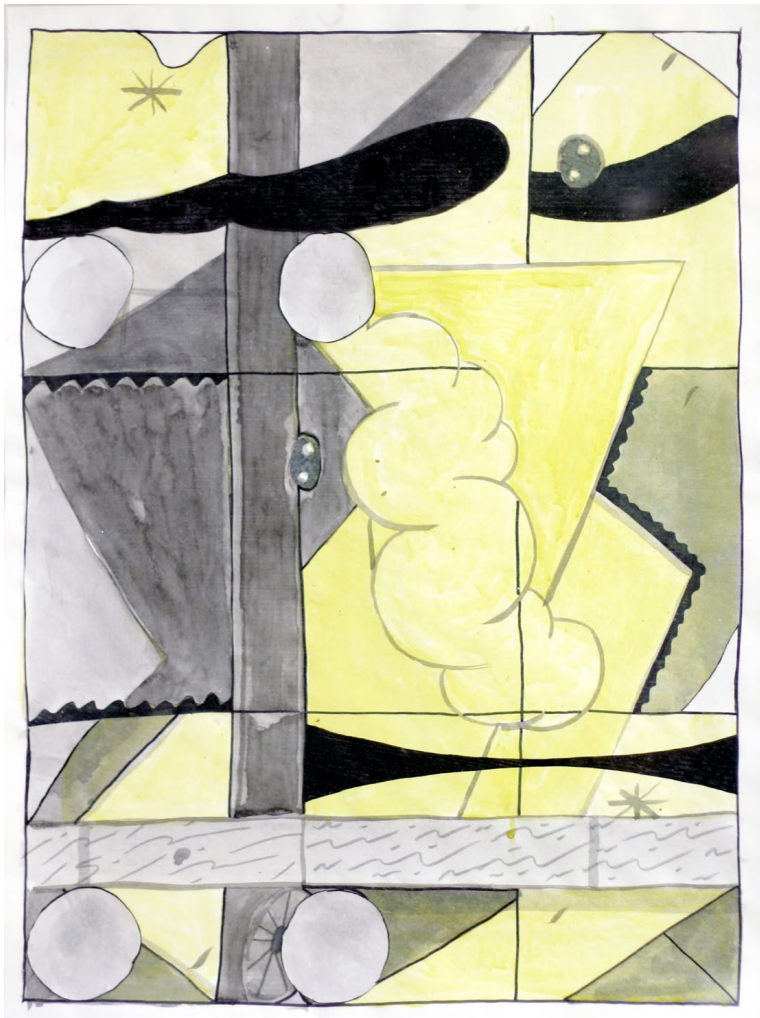


*Format\_10, 2012*  
*liner & acrylics on paper*  
*125 x 85 cm*





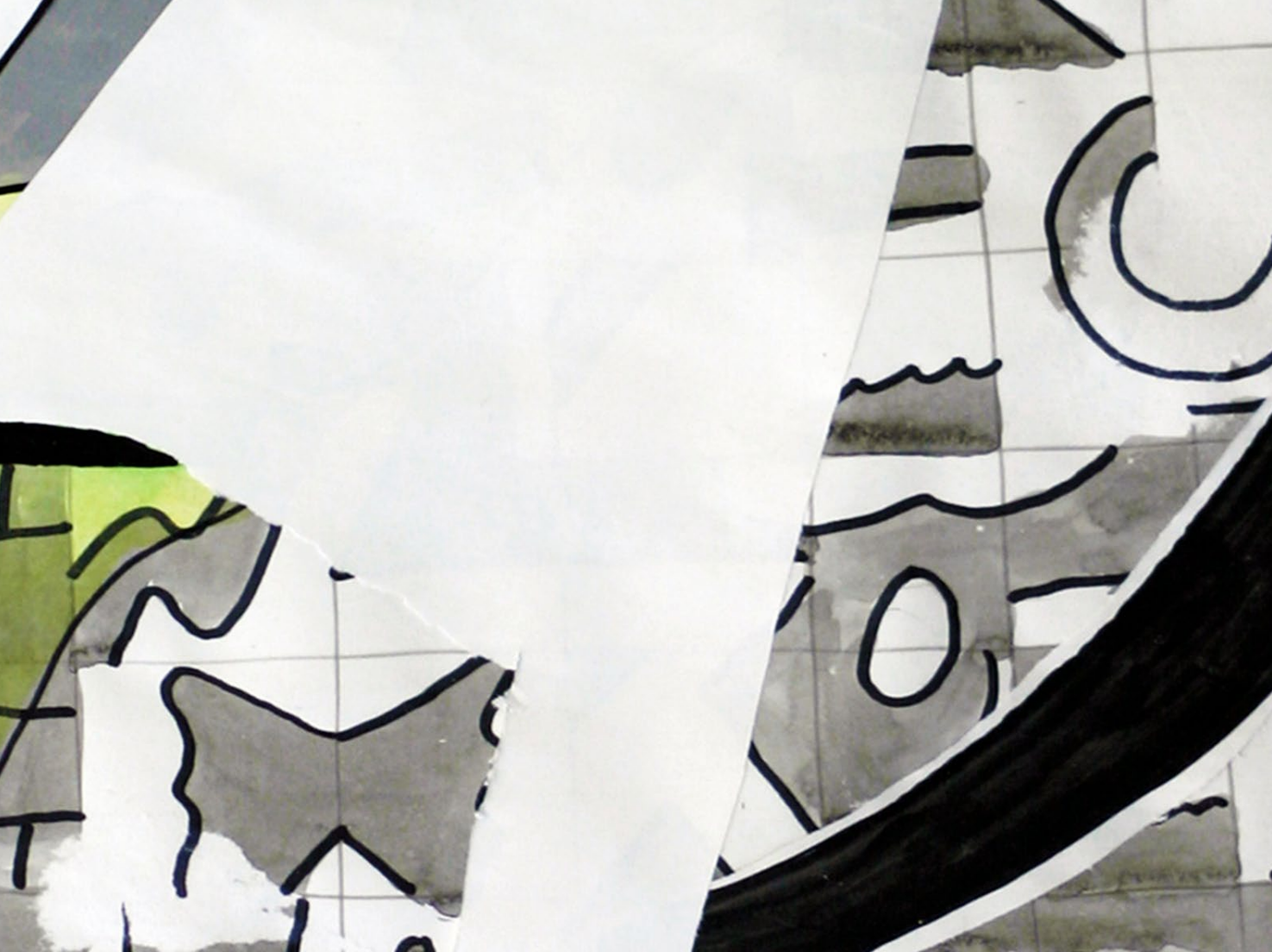




*Fläche, 2012  
ink, acrylics, liner &  
collage on paper  
59 x 44 cm*

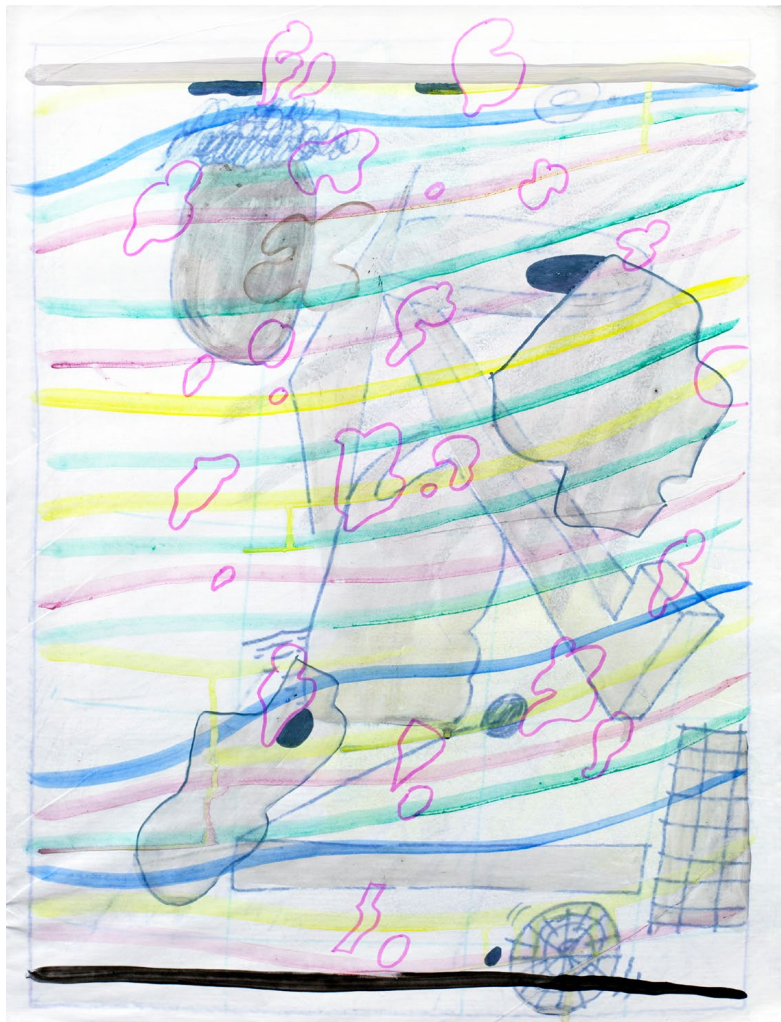
1-4-1, 2012  
ink, acrylics, liner &  
collage on paper  
59 x 44 cm



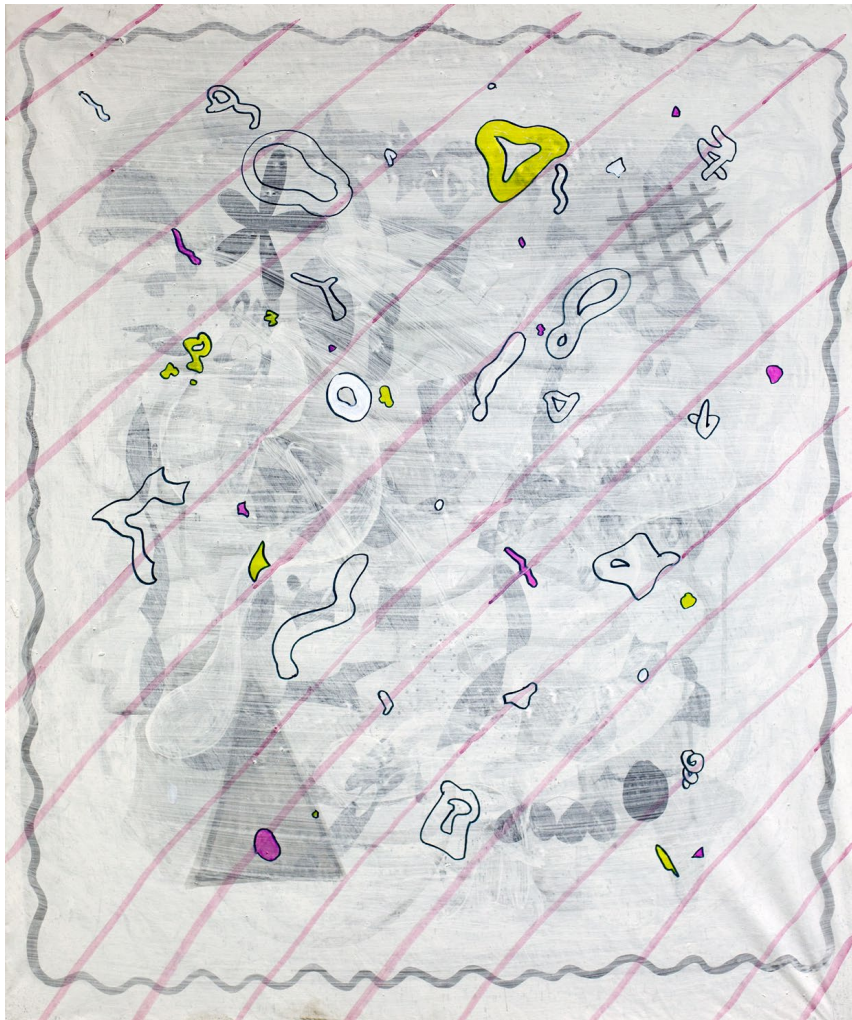




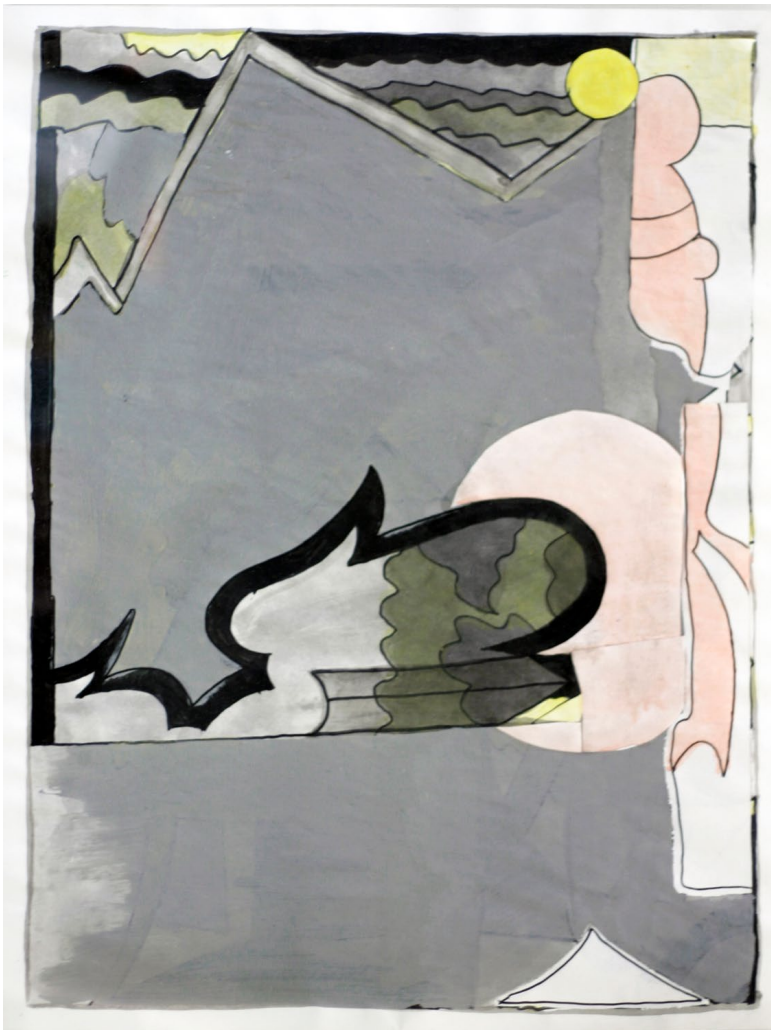
*No. 22, 2012  
ink, acrylics, liner &  
collage on paper  
59 x 44 cm*



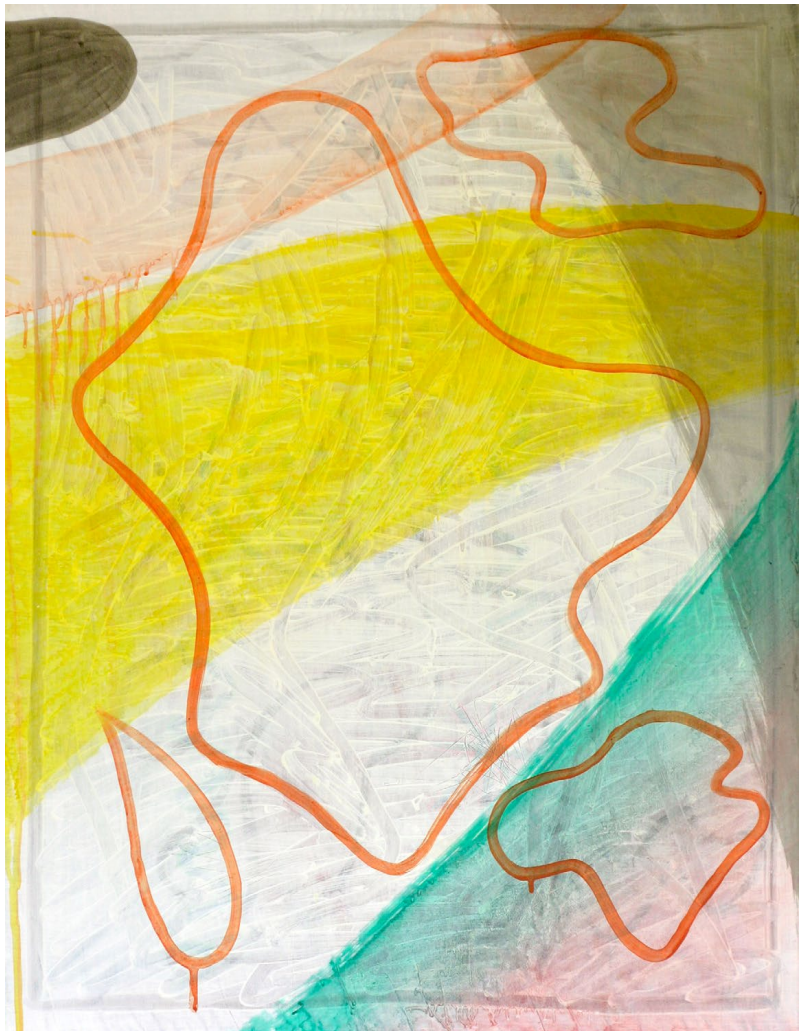
*o.T.*, 2012  
ink, acrylics & liner on paper  
59 x 44 cm



*Caption, 2012*  
*ink, acrylics & liner on paper*  
*90 x 75 cm*



1-4-2, 2012  
ink, acrylics, liner &  
collage on paper  
59 x 44 cm



*Fläche\_10, 2012*  
acrylics on paper  
80 x 60 cm









*Format\_9, 2012*  
acrylics & varnish on paper  
70 x 100 cm





*Fläche\_08, 2012*  
acrylics & liner on paper  
60 x 45 cm

*Raum\_02, 2012*  
*varnish, liner & acrylics on paper*  
*59 x 44 cm*



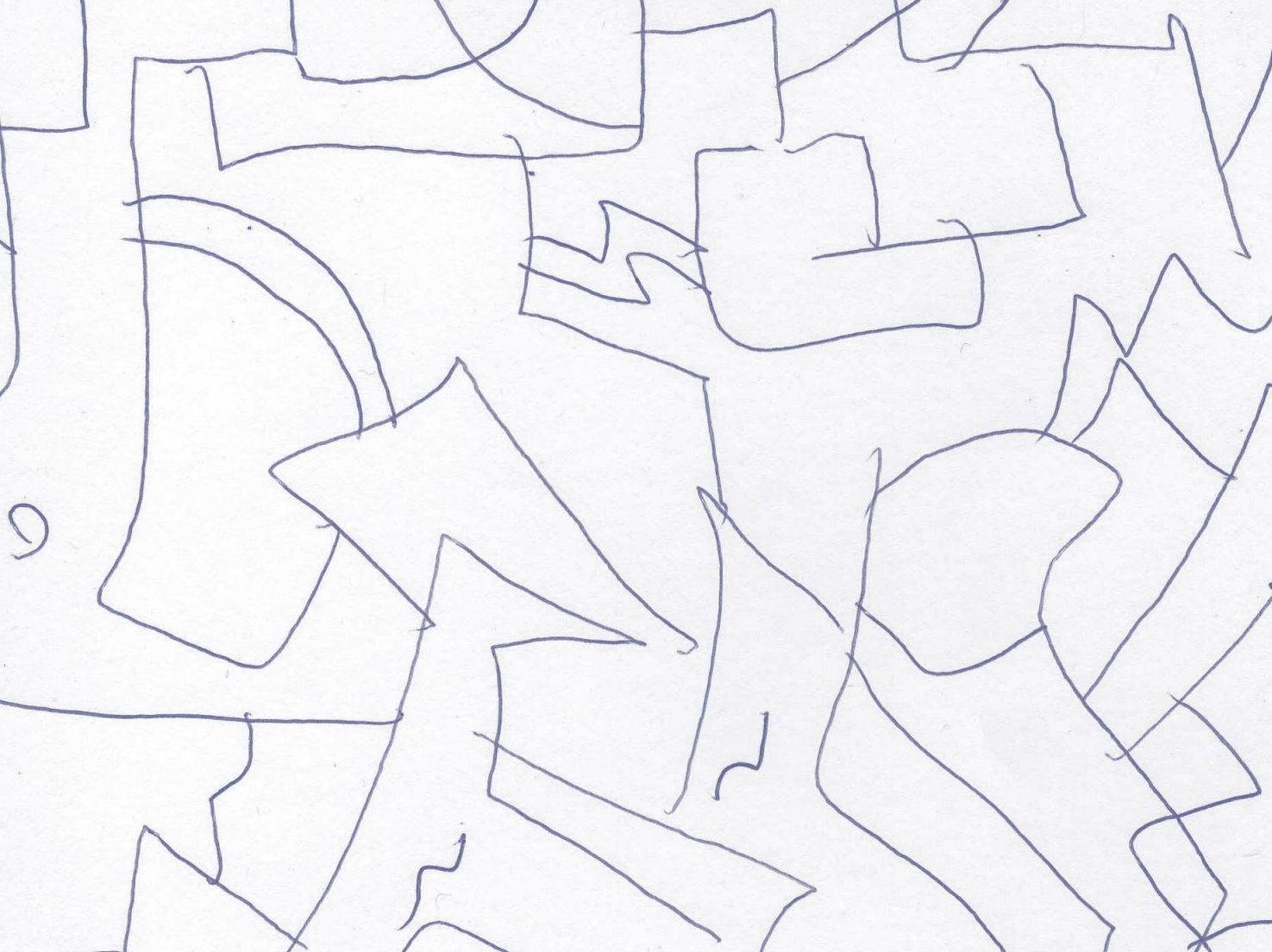


#, 2012  
varnish, liner & acrylics on paper  
100 x 70 cm

*Raum\_07, 2012*  
acrylics & liner on paper  
120 x 90 cm

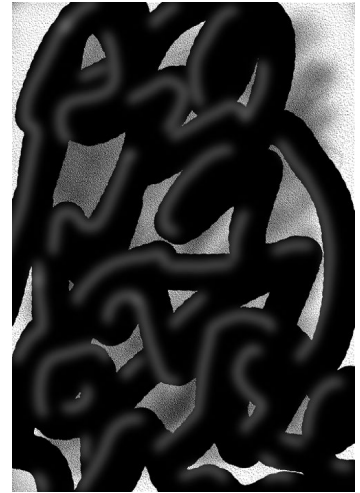








installation view "NEXUS", 2012  
Raum für zeitgenössische Kunst Dresden  
N1, N2, N4; each 2012, screenprint on paper, 100 x 70 cm





*N2, Untitled\_20, Untitled\_22;  
each 2012, screenprint on paper, 100 x 70 cm*



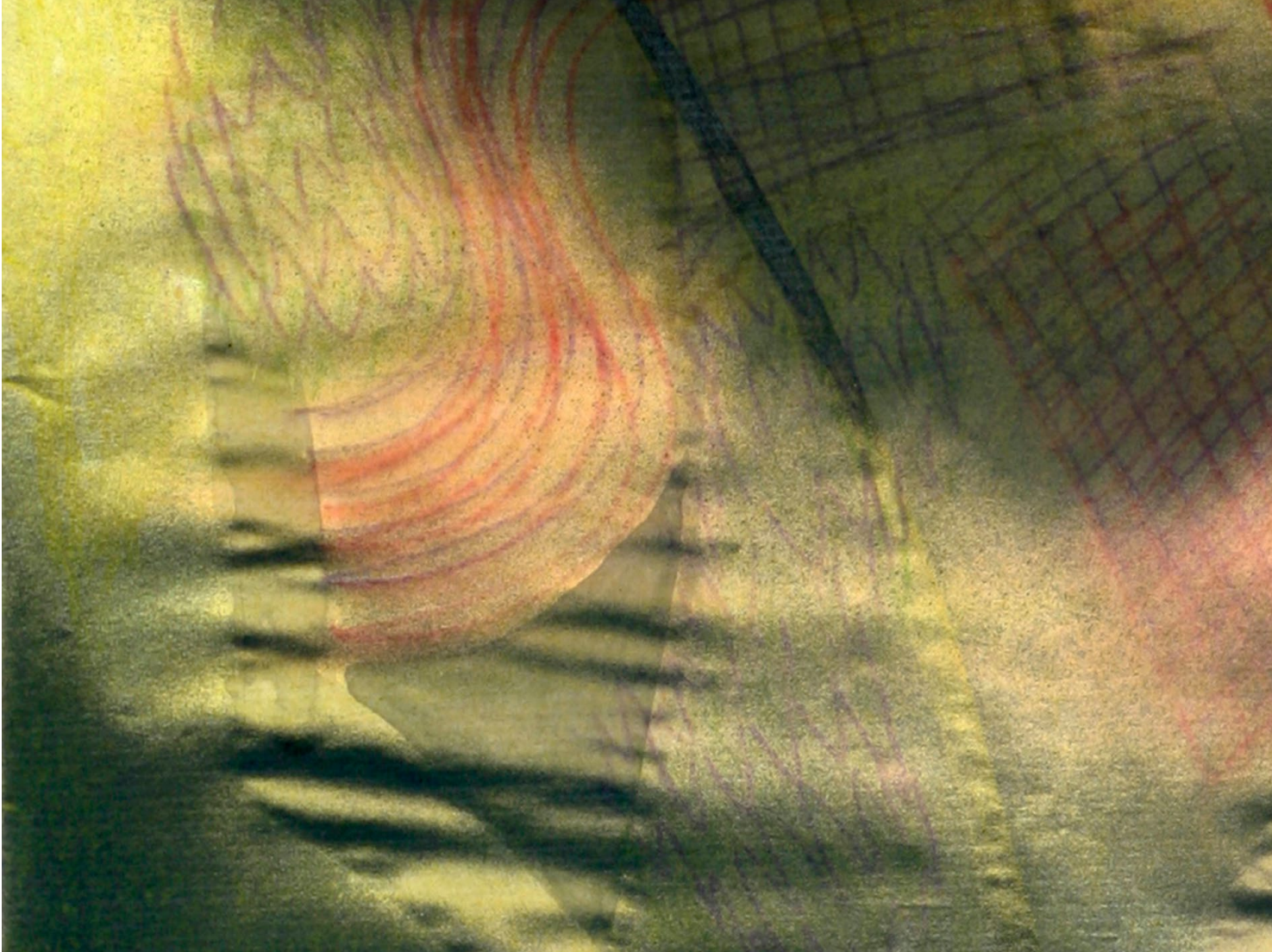
*Format\_8, 2012*  
*acrylics, varnish & liner on paper*  
*59 x 44 cm*



*Geschmier, 2012*  
*ink, liner & varnish on paper*  
*59 x 44 cm*



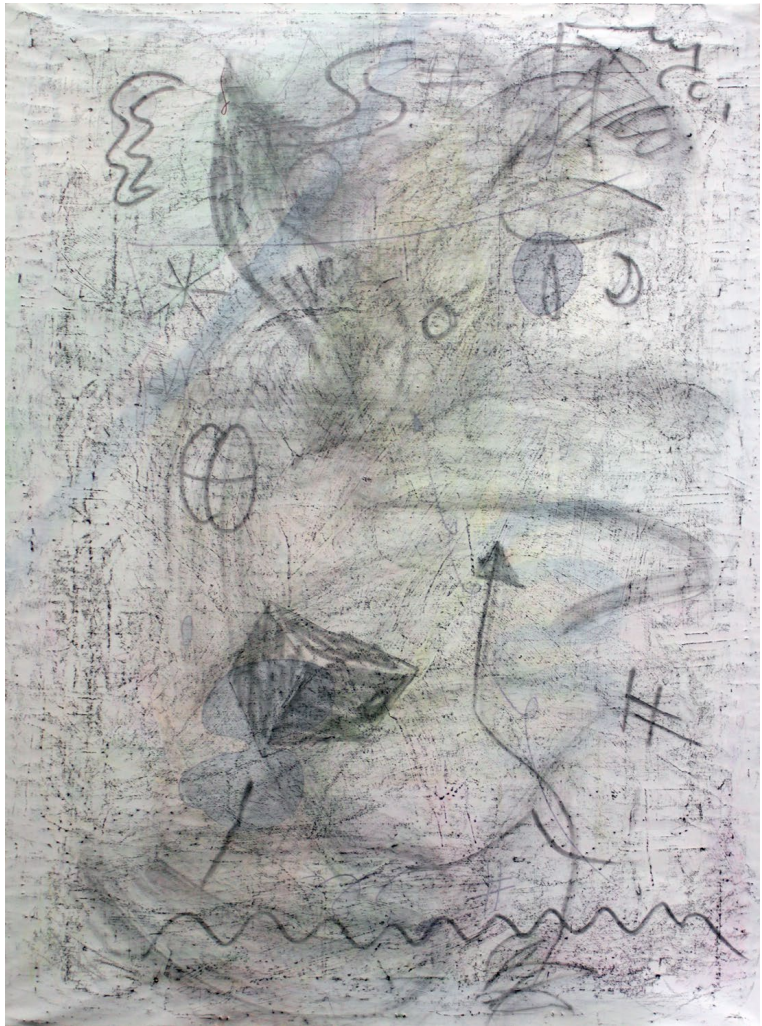
*Format\_7, 2012*  
*ink, acrylics, varnish*  
*& liner on paper*  
*59 x 44 cm*







*Fläche\_04, 2012*  
*ink, liner & acrylics on paper*  
*59 x 44 cm*



*Bild\_2, 2012*  
*acrylics & graphite on paper*  
*140 x 104 cm*

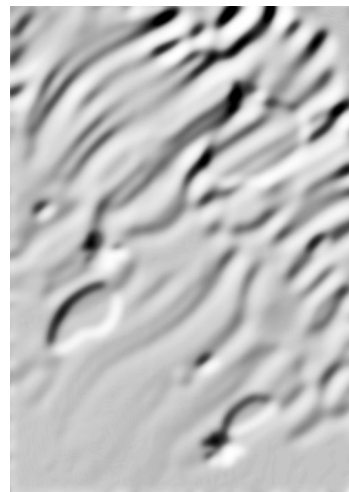






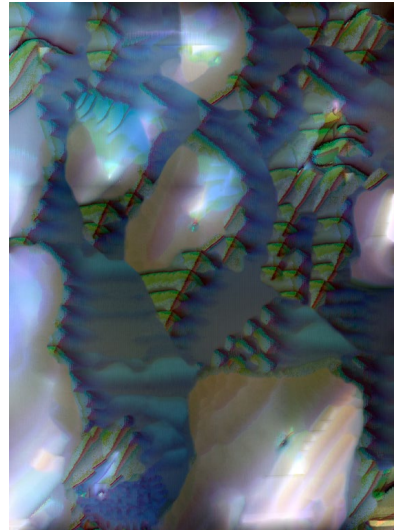
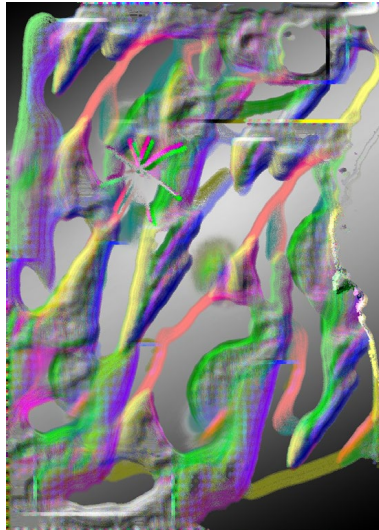
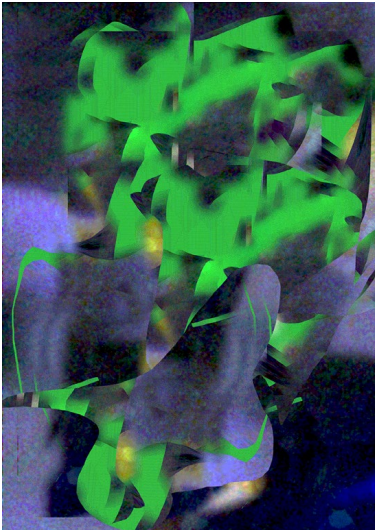


*installation view "Verantwortung", 2012,  
C.Rockefeller Center for the Contemporary Arts, Dresden  
Format\_2, Format\_1; each 2012, laserjet on paper, 135 x 91 cm*



*Format\_17, Format\_20, Format\_16*  
*each 2012, laserjet on paper*  
*110 x 80 cm*





*Untitled\_HDR\_37\_6, Untitled\_HDR45, Untitled\_HDR32;  
each 2013, c-print on paper, variable dimensions*



*Untitled\_HDR15, Untitled\_HDR17;  
each 2013, c-print on paper, variable dimensions*





*installation view "Kontinuität", 2012  
STORE contemporary, Dresden  
edition of 60 handdrawn shirts, each 2012, textile color on size-m shirt*

